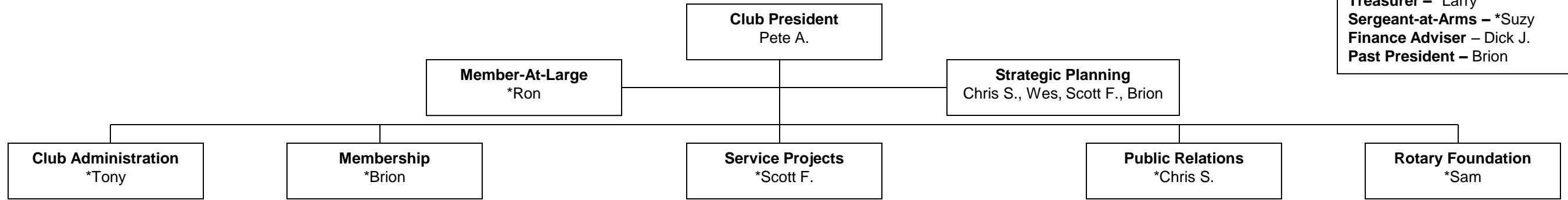


# Chester Rotary Club Organization & Board of Directors

**President Elect** – \*Wes.  
**Secretary** – \*Chris  
**Treasurer** – \*Larry  
**Sergeant-at-Arms** – \*Suzy  
**Finance Adviser** – Dick J.  
**Past President** – Brion



**Club Service**

- Club Reporting**  
Chris S.
- Club Financial**  
Larry
- Club Constitution**  
Deborah
- Founders Night**  
Brion, Krista, June
- Bulletin & Programs**  
Ron
- Fellowship Activity**  
Brion, June
- Continuity Files**  
Dick S.
- Rotarian-On-The Street**  
Leanne, Allen

**Club Service**

- Recruiting & Retaining**  
Brion
- Membership Education**  
Ron, Brion

**Educators**  
Allen, Deborah, John E., Scott L.

**Endowment**  
Dick J.

**Web Site**  
Brion, Dick J

**News Letter**  
John P., Tara

**New Generations**

- Interact Club**  
Tara, Deborah
- H.S. Scholarships**  
Allen, Leanne
- Dictionary / Literacy**  
Rich, Tom

**International**

- Wheelchair Foundation**  
John Erbach
- Shelter Box USA**  
Tony, Warren
- International Initiative**  
Deborah, Brion, Henry

**Vocational**

- 4-Way Test Essays**  
Kathy, Allen
- ElderHomes**  
Pete Adler, Garrett

**Community**

- WGT Service Award**  
Scott F, Chris S
- Chester YMCA**  
Kathy
- BSA / GSA**  
Pete B, Dave, Boo
- Rich. Fr. of Homeless**  
Scott L. Rich
- Christmas Parade**  
Dave, Larry
- Salvation Army**  
Sam G.,
- Dinner at McGuire VA**  
Dick S, Krista

**Fund Raising Committees**

- MMFF**  
Warren, Chris, Wes, Krista, Tricia, Tara, Tony, Brion, John E, June, Suzy, Bill R
- Bowling Tournament**  
Larry Jr., Tricia, Bill H., Tom, Scott L, Sam
- JTCC Fool For Arts**  
Pete B., Bill R., Wes, Deborah, Dick J, Ron
- Hog BBQ**  
Scott F., Rich., Henry, Dick S., Leanne, Dave, Pete B., Allen, Garrett., John P, Kathy, Bill H,
- Club Sponsorships**  
Scott F, Chris

**BOLD = Committee Grand Poohbah**

**The Foundation**

- PH Fellowships**  
Sam G, Ron
- RI Polio Plus Match**  
Sam, Larry
- Foundation Grants**  
Rich, Bill R
- Annual Program Fund**  
Sam, Larry
- GSE Grand Poohbah**  
Ron

- HS Scholarships**
- (1) Thomas Dale
  - (2) Matoaca
  - (3) Chesterfield Community

- Elementary School Literacy**
- (1) CE Curtis
  - (2) CC Wells
  - (3) Harrogate
  - (4) Elizabeth Scott
  - (5) Margarite Christian
  - (6) Enon
  - (7) Ecoff
  - (8) Greenfield

\* Member of the Board